

Milton Road Wimbledon, SW19 8SE

£950,000 Freehold



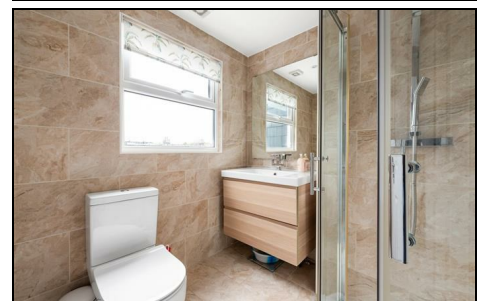
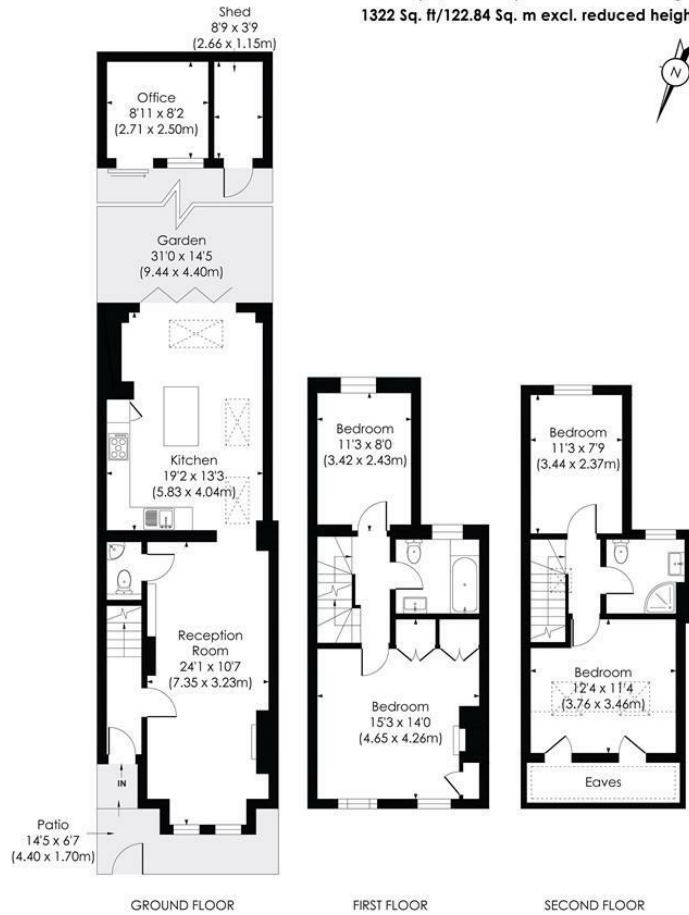
A stunning four bedroom, two bathroom, fully extended Victorian family home in fantastic condition throughout having been exceptionally well cared for by the current owners. Situated in the popular Poets area of Wimbledon with great transport links nearby as well as excellent local schools. On the ground floor there is a large through lounge and a beautiful open plan kitchen/diner with bi-fold doors opening onto a lovely south facing garden with multi-functional Studio/Garden Room. Given the excellent overall condition an early viewing is highly recommended.

MILTON ROAD, SW19

Approx. Gross Internal Floor Area

1374 Sq. ft/127.69 Sq. m incl. reduced height

1322 Sq. ft/122.84 Sq. m excl. reduced height



This floor plan has been prepared for the purpose of illustration only in accordance with the latest RICS code of measuring practice and is not to scale. All measurements and areas are approximate and whilst every effort has been made to ensure the accuracy of the plan contained here, no responsibility is taken for any error, omission or misstatement.

© Pixangle Property Marketing Ltd. info@pixangle.com Tel: 0208 870 2118

- Poets Location
- Victorian Terraced House
- Four Double Bedrooms and Two Bathrooms
- Open Plan Kitchen/Dining Room
- Through Reception Room
- Garden Studio
- Southern Aspect Garden
- Freehold
- EPC Rating E
- Council Tax Band E

Energy Efficiency Rating		Current	Potential
Very energy efficient - lower running costs	A		
21-91	B		77
18-20	C		
15-17	D		
12-14	E	43	
9-11	F		
1-8	G		
Not energy efficient - higher running costs			
England & Wales		EU Directive 2002/91/EC	

For Free Mortgage Quote and Best Mortgage Rates, call an Ellisons Mortgage Advisor on 020 8944 9494



Although these particulars are believed to be correct, their accuracy is not guaranteed and they do not form part of any contract.

Celebrating 30 years of successful Sales and Lettings in Merton

